

BareFLEET

FLEET INTELLIGENCE



FROM BOAT TO BOARDROOM

WHY BAREFLEET...



MONITOR MACHINERY HEALTH

- RELAY ENGINE HOURS
- SEE LONG TERM TRENDS
- GET EARLY WARNINGS
- RECEIVE LIVE ALARMS
- IDENTIFY MACHINERY ABUSE
- DIAGNOSE FAULTS
- RESOLVE WARRANTY ISSUES

... MAXIMISE AVAILABILITY



REPORT VESSEL MOTION

- PASSENGER RIDE COMFORT
- MOTION SICKNESS INDICATION
- CREW TRANSFER HEAVE MOTION
- IMPACT ACCELERATIONS
- REPORTS TO ISO 2631-1
- COMPARE VESSEL SEA KEEPING

... CREW TRANSFER AND
FERRY CUSTOMERS



LOG DAILY ACTIVITY

- TRACK PLOT
- TRIP DISTANCE
- FUEL CONSUMPTION
- WEATHER
- VESSEL MOTION
- PASSAGE TIMING
- TURBINE TOWER VISIT LOG
- PILE PUSH-ON & IMPACT FORCES

... REDUCE REPORTING
BURDEN



SAVE FUEL

- TRACK FUEL BURN VS SPEED
- CALC CO2 EMISSIONS
- COMPARE FLEET PERFORMANCE
- MONITOR BUNKER LEVELS
- FEED INTO SEEMP

... EVIDENCE SAVINGS TO
CUSTOMERS



OUR CUSTOMERS

- PORT AUTHORITIES
- PILOT AND TOWAGE
- SURVEY
- TURBINE CREW TRANSFER
- WIND FARM OPERATORS
- FERRIES
- COASTAL BULK SHIPPING
- WORKBOATS
- BOAT BUILDERS

TRIP SUMMARY					
Parameter	Value	Units			
Trip Distance	62.1	Nm			
Fuel Used	911	L			
Avg Fuel Consumption	14.7	L / Nm			
CO2 Emitted	2388	Kg			
Hours at Sea	11	Hrs			
Avg Vessel Speed	5.8	Kts			
Max Vessel Speed	19.3	Kts			
Time Startup	06:11	-			
Time Shutdown	16:54	-			
Avg Wind Speed	4.2	Kts			
Max Wind Speed	17.0	Kts			
Avg Heave	0.1	m			
Max Heave	0.9	m			
Avg Vertical Accel (RMS)	0.15	m/s^2			
Motion Sickness Dose	37	m/sec^4 1.5	(Ref ISO2631-1)		
Vomiting Incidence	12	%	(Ref ISO2631-1)		

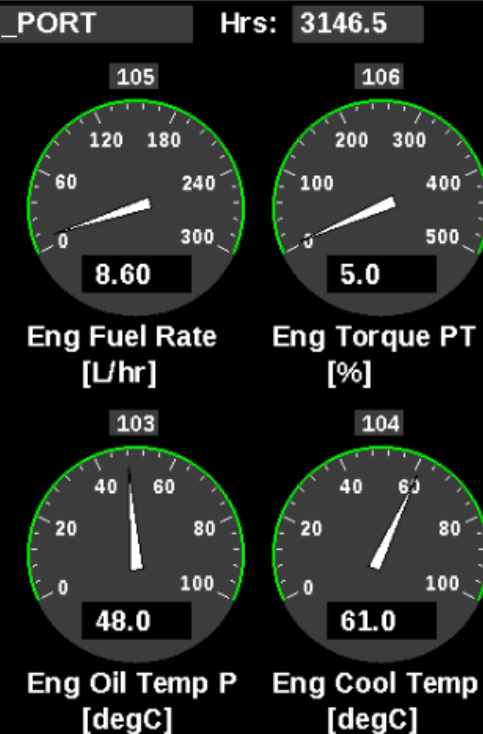
ENGINE DATA					
Parameter	PORT ENGINE	STBD ENGINE	UNITS		
Engine Hours - Period	11	11	Hrs		
Engine Hours - TOTAL	5368	5382	Hrs		
Fuel Used - Period	472	440	L		

ALARMS					
Time	Alarm	Severity	Status		
08/05/17 07:17	High Vibration Lower STB		CLEARED		

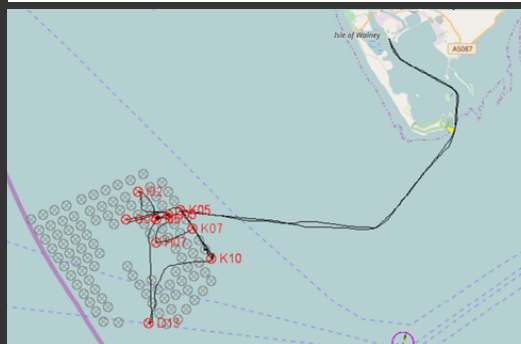
TRENDS					
Parameter	PORT		STBD		UNITS
	Actual	Ref Value	Actual	Ref Value	
Coolant Temp	78	81	85	81	degC
Oil Pressure	261	250	299	250	kPa
Oil Temp	98	105	97	105	degC
Boost Pressure	248	240	248	240	kPa
Temp Lower 1	69	80	75	80	degC
Temp Lower 2	83	75	69	75	degC
Temp Lower 3	88	75	70	75	degC

REMOTE ACCESS

- SEE LIVE AND HISTORIC DATA ON OUR WEB PORTAL
- GET LIVE ALARMS
- DRILL DOWN INTO THE DETAIL TO HELP SOLVE PROBLEMS
- EVERYTHING YOU WOULD EXPECT FROM A REMOTE FLEET MONITORING SYSTEM



WE THINK THE
REAL VALUE IS
IN THE
REPORTING



PILE TRANSFERS						
Time On [HH:MM]	Time Off [HH:MM]	Pile [-]	Duration [Mins]	Heave (avg) [m]	Pushon [Te]	
08:01	08:11	K05	10	0.1	3.3	
08:16	08:25	I05	8	0.1	2.7	
08:40	08:49	D13	9	0.1	2.3	
09:05	09:15	K10	10	0.0	2.4	
10:55	10:58	K05	2	0.1	1.7	
11:41	11:55	K10	13	0.0	2.4	
12:01	12:03	K07	2	0.2	0.7	
12:09	12:16	H07	7	0.1	1.6	
12:23	12:37	J05	14	0.1	2.2	
14:02	14:14	I05	12	0.0	1.7	
14:16	14:20	I05	4	0.0	1.8	
14:26	14:49	I02	23	0.0	2.7	
15:01	15:08	J05	7	0.1	1.9	
15:15	15:22	G04	7	0.1	2.6	
15:32	15:37	K05	5	0.1	2.2	

REPORTING LOG

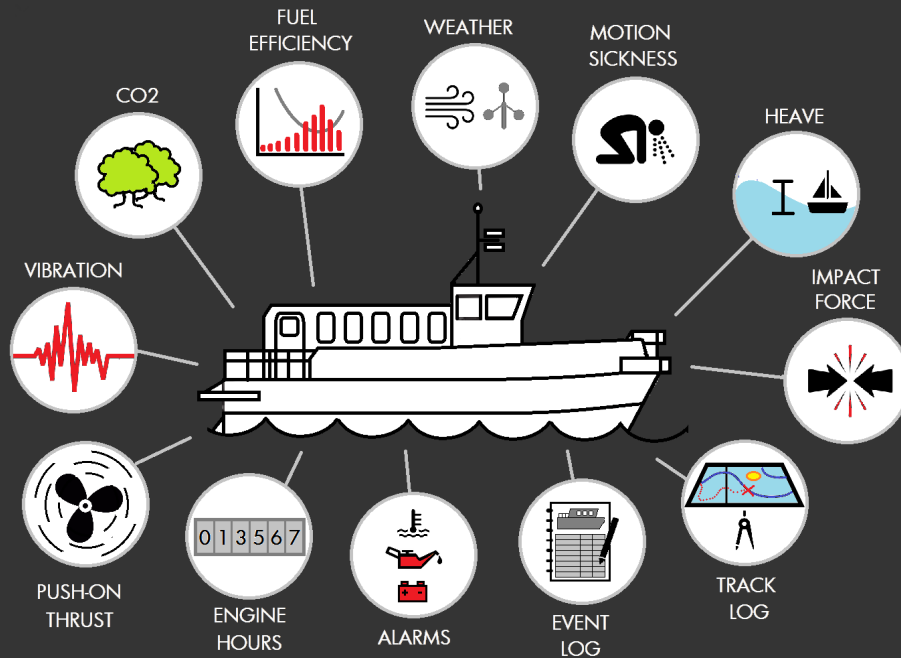
- CONCISE LOG OF FLEET ACTIVITY, HEALTH AND PERFORMANCE
- COMPREHENSIVE, CLEAR AND ALWAYS UP TO DATE
- E-MAILED AUTOMATICALLY
- RELIED UPON BY MARINE COORDINATORS AND MAINTENANCE MANAGERS
- SUMMARY REPORTS AVAILABLE FOR DIRECTORS AND YOUR CUSTOMERS

LOW COST

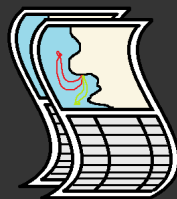


DATA IS LOGGED ON BOARD AND RELAYED ASHORE ONLY WHEN NECESSARY. THIS KEEPS OPERATING COSTS REALLY LOW BY MAXIMISING USE OF THE GSM NETWORK.

FROM BOAT TO BOARDROOM



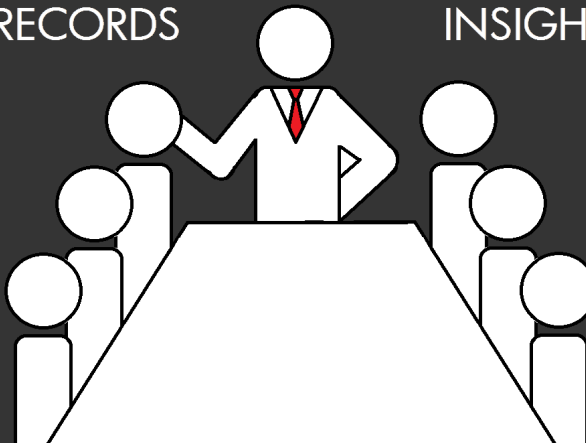
FLEET INTELLIGENCE



RECORDS



INSIGHT



+44 (0)1453 368008



info@reygar.co.uk



www.reygar.co.uk